

## Greater Fishponds Neighbourhood Partnership (GFNP) Draft Vision and mission statement

**Date: Thursday 6<sup>th</sup> December 2012**

**Report of: Mark Logan**

**RECOMMENDATIONS: The Neighbourhood Partnership is asked to agree draft:**

- 1- Proposed Vision Statement
- 2- Proposed Mission Statement
- 3- 2012/13 priorities
- 4- Neighbourhood Plan

### **Part 1: GFNP Vision statement**

- 1- Working with Bristol City Council and its partner agencies in creating safe welcoming communities which respect their surroundings and others. Promoting and supporting retail centres and local employment opportunities. Provide high quality green spaces for sports, outdoor activities, nature conservation and biodiversity, raising the quality and standard of life for all.

### **Part 2: GFNP Mission statement**

- 2- The Greater Fishpond Neighbourhood Partnership is a board of representatives from Eastville, Frome Vale and Hillfields Wards within Bristol. Its purpose is to act as a point of contact for the local community, business and organisations within these wards. The board will set priorities annually to help influence the way in which services and local objectives can be directed to meet the needs of Eastville, Frome Vale and Hillfields.

### **Part 3: 2012/13 Priorities**

- 3- Current priorities for 2012/13 are:

- Targeting anti-social behaviour
- Multi agency action relating to prostitution, drugs and kerb crawlers.
- Improving parks and green spaces
- Tackling littering and fly tipping.
- Traffic and transport, in particular, speeding and parking
- Restrictions.
- Addressing the lack of community facilities for adults.

#### **Part 4: Neighbourhood Plan**

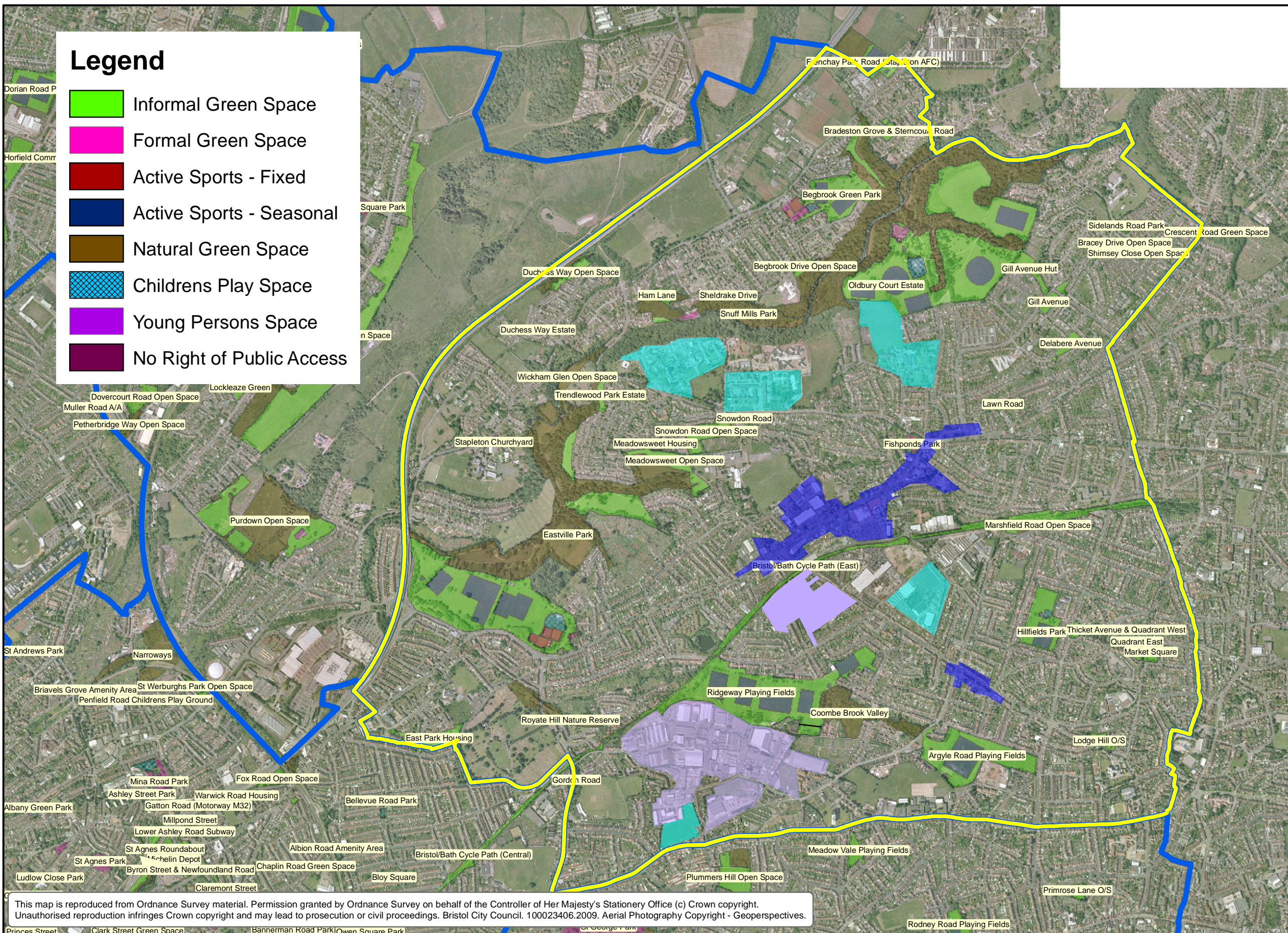
4- Appendix 1 shows visual map of proposed Neighbourhood Partnership Plan. The group is invited to comment on its content.

Note: An electronic copy has been circulated on Monday 26<sup>th</sup> November 2012. Large maps will be brought to the NP meeting for people to comment on.

# Legend

- Informal Green Space
- Formal Green Space
- Active Sports - Fixed
- Active Sports - Seasonal
- Natural Green Space
- Childrens Play Space
- Young Persons Space
- No Right of Public Access

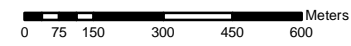
- primary shopping areas
- new housing allocations
- principle industrial/warehousing land use



This map is reproduced from Ordnance Survey material. Permission granted by Ordnance Survey on behalf of the Controller of Her Majesty's Stationery Office (c) Crown copyright. Unauthorised reproduction infringes Crown copyright and may lead to prosecution or civil proceedings. Bristol City Council. 100023406.2009. Aerial Photography Copyright - Geoperspectives.



**Greater Fishponds Neighbourhood Partnership Vision Statement**  
**Working with Bristol City Council and its partner agencies in creating safe welcoming communities which respect their surroundings and others. Promoting and supporting retail centres and local employment opportunities. Provide high quality green spaces for sports, outdoor activities, nature conservation and biodiversity, raising the quality and standard of life for all.**



Phone: 0117 922 3719  
 Fax: 0117 922 3744  
 bristolparks@bristol.gov.uk  
 www.bristol.gov.uk/parks



The provision of information by Bristol City Council does not imply a right to reproduce or commercially exploit such information without the Council's express prior written permission. Reproduction or commercial exploitation of information provided by the Council without its express permission may be an infringement of copyright. The council is unable to grant permission to reproduce or re-use any material that is the property of third parties. Permission to reproduce or re-use such material must be obtained from the copyright holders.